



A Well-Presented Two Bedroom End-Terrace Home in Cepen Park South

Nestled within a quiet cul-de-sac on the sought-after Cepen Park South development, this attractive two bedroom end-terrace home offers modern living in a convenient location.

The ground floor comprises an inviting entrance hall, a well-equipped kitchen, and a spacious open-plan sitting/dining room with direct access to the rear garden. Upstairs, the property provides a bright landing area, a primary bedroom with fitted wardrobes, a well-proportioned second bedroom, and a family bathroom.

Externally, the home boasts an enclosed rear garden with gated side access, along with a driveway offering off-road parking for two vehicles.

Perfect for first-time buyers, downsizers, or investors alike, this property combines comfort, practicality, and a desirable setting close to local amenities and transport links.

## Viewing

Viewings Strictly by appointment with the sole selling agents Atwell Martin call or e-mail us today to confirm your appointment | 65 New Road, Chippenham, Wiltshire SN15 1ES

## Situation - Chippenham

Chippenham itself has a wide range of amenities to include High Street retailers plus supermarkets and retail parks and, in addition, there is a leisure centre with indoor swimming pool, library, cinema and public parks. Chippenham also benefits from excellent schooling with numerous primary and three highly sought after secondary schools. For those wishing to commute there is also a regular main line rail service from Chippenham station to London (Paddington) and

the West Country and the M4 motorway is easily accessed via Junction 17 a few miles north of the town.

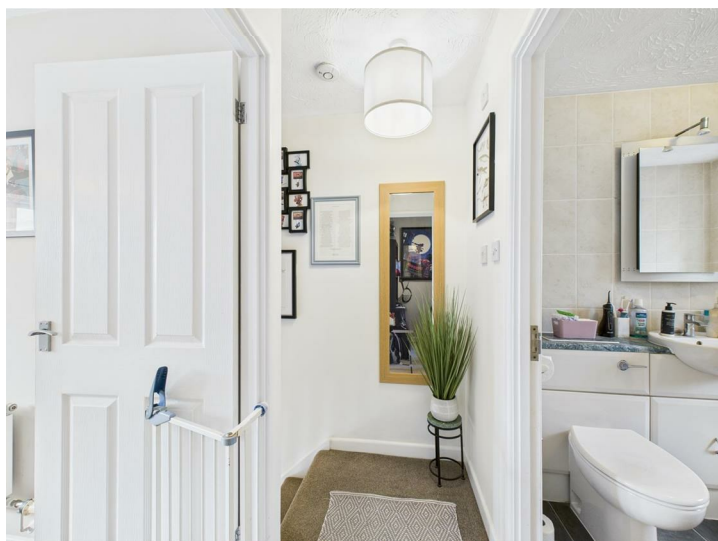
## Property Information

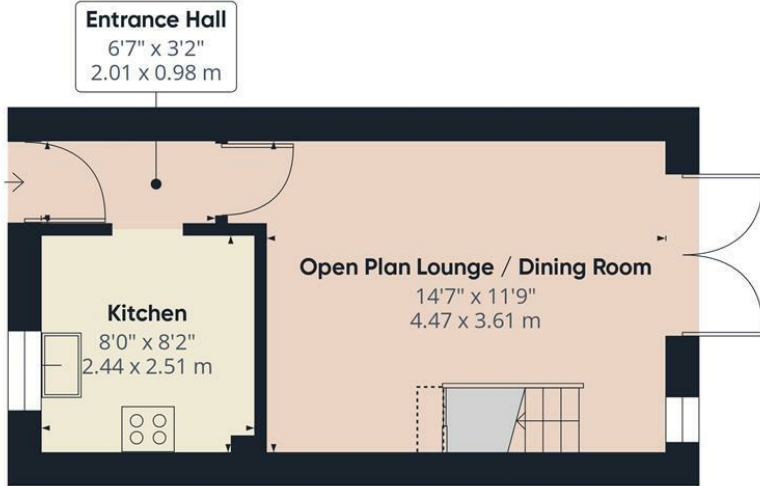
Utilities/Services - Mains Electric, Water & Drainage, Gas Central Heating

Wiltshire Council Tax - Band B

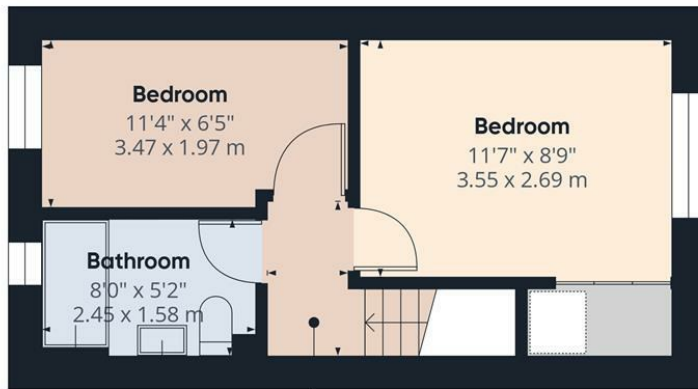
Tenure - Freehold







Ground Floor



First Floor

**Approximate total area<sup>(1)</sup>**

513 ft<sup>2</sup>  
47.6 m<sup>2</sup>

**Reduced headroom**

2 ft<sup>2</sup>  
0.2 m<sup>2</sup>

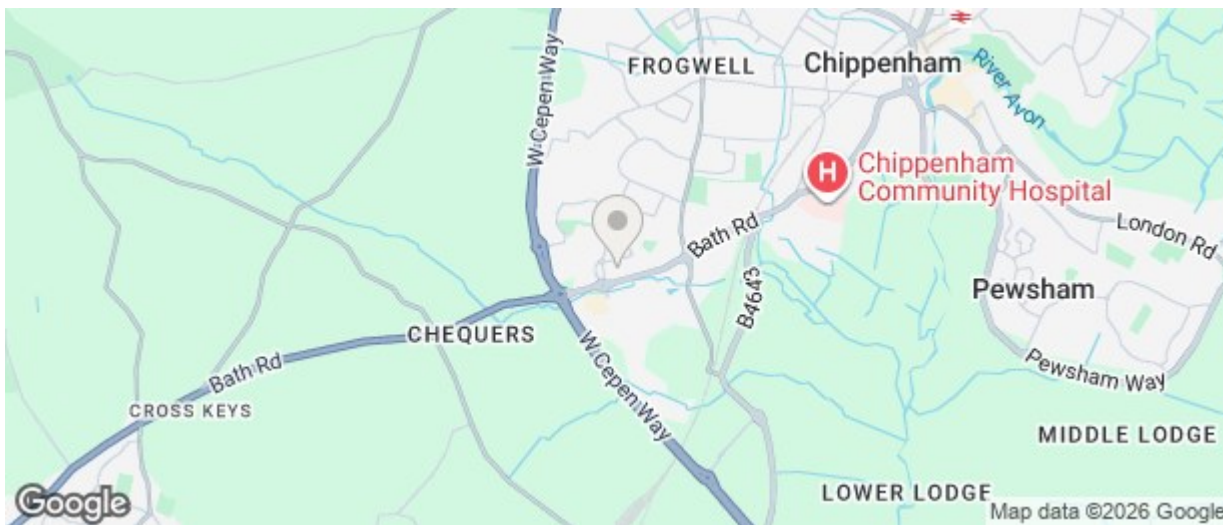
(1) Excluding balconies and terraces

**Reduced headroom**

Below 5 ft/1.5 m

Calculations reference the RICS IPMS 3C standard. Measurements are approximate and not to scale. This floor plan is intended for illustration only.

GIRAFFE 360



Energy Efficiency Rating		
	Current	Potential
Very energy efficient - lower running costs		
(92 plus) A		
(81-91) B		87
(69-80) C	71	
(55-68) D		
(39-54) E		
(21-38) F		
(1-20) G		
Not energy efficient - higher running costs		
England & Wales EU Directive 2002/91/EC		
Environmental Impact (CO <sub>2</sub> ) Rating		
	Current	Potential
Very environmentally friendly - lower CO <sub>2</sub> emissions		
(92 plus) A		
(81-91) B		
(69-80) C		
(55-68) D		
(39-54) E		
(21-38) F		
(1-20) G		
Not environmentally friendly - higher CO <sub>2</sub> emissions		
England & Wales EU Directive 2002/91/EC		

The particulars are set out as a general outline only for the guidance of intended purchasers or lessees, and do not constitute, any part of a contract. Nothing in these particulars shall be deemed to be a statement that the property is in good structural condition or otherwise nor that any of the services, appliances, equipment or facilities are in good working order. Purchasers should satisfy themselves of this prior to purchasing